



**BE
Amazing**

**START
YOUR
DREAM
CAREER**

THE
TEMPLE
PAUL MITCHELL
PARTNER SCHOOL

who we are

OUR PROMISE



EDUCATION. COMMUNITY. A PATH TO OPPORTUNITY.

Welcome to your future. It's going to be amazing.

MULTIFACETED TRAINING

From technique to artistry to business, we teach the skills you need to launch your beauty industry career.

UNIQUE CULTURE

Be a part of a welcoming community of positive, passionate and supportive peers, educators and staff.

FOCUS ON CAREER

Your success is our priority. We're here to help you plan your path, work toward your goals and start your dream career.

what we teach

HOW WE'RE DIFFERENT

A Paul Mitchell Schools education is about much more than just getting your license. Our unique, multifaceted curriculum gives you the skills you need to be successful: a thorough grounding in technique, artistry and business, plus career resources, advice, contacts and support.



HOW WE TEACH

Are you a visual learner? Do you learn best hands-on? We celebrate all learning styles! Our classes combine hands-on instruction with live demos and lectures, multimedia, video (even music!) so that everybody learns and has fun!

START WITH

KIT OF PROFESSIONAL-LEVEL SUPPLIES

- Exclusive Paul Mitchell® styling tools and cutting, color and styling essentials
- Digital, print and video instructional materials

LEARN

HANDS-ON WITH

- Mannequin heads
- Live models
- Live demos
- Guest artists
- The Cutting System
- The Color System
- Exclusive videos and apps

GET

COSMETOLOGY SKILLS PLUS

- Business skills
- Merchandising skills
- Retail skills
- Leadership skills
- Portfolio prep
- Personal career plan
- Educational and career path guidance
- **Opportunities to Shine:**
 - Honors programs in cutting, color, texture, men's cutting and makeup
 - The Dean's List
 - Career fairs
 - Fashion shows
 - FUNraising for charity
 - Student teams

...and much more

WALK AWAY WITH

THE PREPARATION YOU NEED TO START YOUR CAREER

- Real-world salon skills
- Industry contacts
- Community of committed, passionate peers
- The Paul Mitchell® name behind your certificate

...and the preparation you need to pass the State Board and become a licensed cosmetologist.

what we teach

OUR PROGRAM



We prepare our students (or as we call them, Future Professionals) for careers in the beauty industry as licensed cosmetologists. Students are guided by our Learning Leaders through the Cosmetology program's three levels—Core, Adaptive and Creative—taking on more advanced techniques and building real-world skills and confidence as they move through each stage.

CORE

Learn the fundamentals in the classroom

Practice techniques on mannequin heads

A Learning Leader will guide you every step of the way

ADAPTIVE

Practice on real people in a salon-like environment

Perfect your skills with help from Learning Leaders

CREATIVE

Work independently (under the supervision of a Learning Leader)

Prepare a career portfolio

Prepare to pass the State Board test

Develop speed and prepare to start your career

PHASE TWO

Optional course of intensive study for highest-achieving Future Professionals



where we can take you
**AMAZING
SUPPORT**



”
*The opportunities are
absolutely unlimited!*
Jamie Anderbery-Stout
Corporate team member and
Paul Mitchell School alum

Your career is our priority! At Paul Mitchell Schools, career planning starts as soon as your education does. While it's up to you to find your dream job, our placement assistance program will support you every step of the way.

HOW WE SET YOU UP FOR SUCCESS

Here are a few of the resources, programs and strategies we use to help you start your dream career.

PROFESSIONAL DEVELOPMENT CURRICULUM

Build your résumé, create a standout portfolio, visit local salons, and learn how to have successful interviews.

PROFESSIONAL CAREER FAIRS

Held throughout the year so you have many opportunities to get to know prospective employers.

VISITING ARTISTS PROGRAM

A great opportunity to network with visiting beauty industry professionals—including local salon owners.

PAUL MITCHELL SCHOOLS GRADUATES

With our national network, our alumni are everywhere—and they're a great source of advice and job opportunities.

FUTURE PROFESSIONAL ADVISOR

Guidance and support from a career specialist to mentor you from day one of the program.

■ Ask us about our placement rate. The Admissions Leader can share up-to-date statistics for this location.



DIGITAL SUPPORT

Information, inspiration and sweet rewards. They're all just a click away, thanks to Plugged In and Learning Perks — available only at Paul Mitchell Schools.

PLUGGED IN

Our online portal puts the world of Paul Mitchell Schools on your smartphone, tablet or computer.

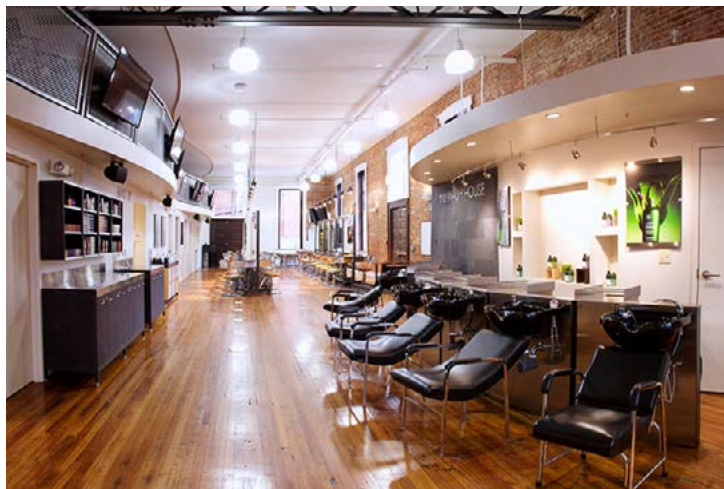
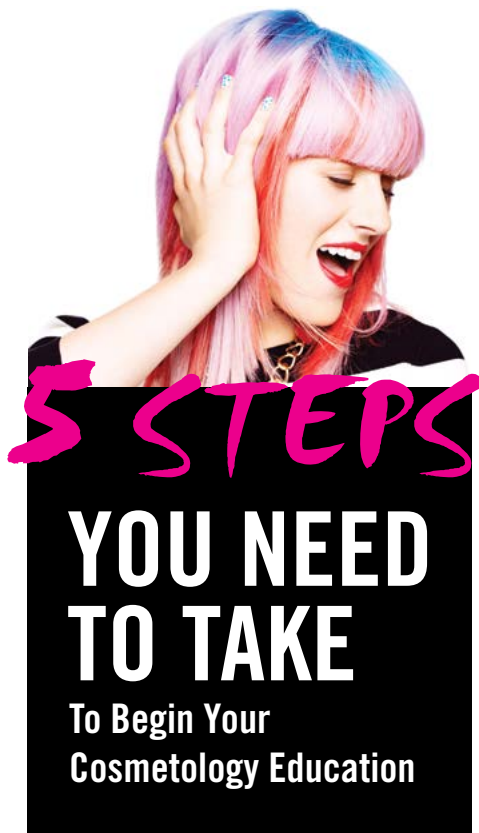
LEARNING PERKS

We celebrate your success in school! With our rewards program, the more you learn, the more you earn.

OUR NETWORK

With over 100 schools and over 100,000 barbershops and salons in our Paul Mitchell network, you'll find plenty of peers to connect with after you graduate — no matter where you go.

All services are performed by students under the direct supervision of a licensed instructor. Financial aid available for those who qualify. For more information on our graduation rates, the median loan debt, who completes the program, and other important information please visit our website at paulmitchell.edu/ge.



1. REQUEST MORE INFORMATION

Your first step is to request more information and do your research! Fill out our online form and our admissions team will reach out to you right away. Be sure to give us your mailing address so we can send the entire packet of information through the mail.

Our website contains lots of information on our curriculum, guest artists, and learning opportunities so be sure to take a good look around. Also, you can find tons more information on our social spaces as well. (We're even on Snapchat!) Follow our hashtag #templefrederick to see some of our Future Professionals' work.

Don't forget to research other cosmetology schools in your area as well. It's important to find the school that is best for you and your future.

2. TOUR THE SCHOOL

One of the most important steps in your research is your campus visit. We recommend that you visit our school early on in your decision making process to get the big picture of the cosmetology industry, understand the curriculum and give yourself enough time to complete the enrollment process.

Our tours are a very informative and personalized experience. Please allow at least 90 minutes to ensure all of your questions are addressed.

During your visit to The Temple you and your support team will have an opportunity to:

- Visit the classrooms and clinic floor
- Meet our incredible Learning Leaders
- Speak with current "Future Professionals" enrolled in the program
- Learn about our culture, regional and national guest artists, student run programs and your learning materials
- Speak with a Financial Aid Leader about your funding options

We're so excited that you're considering The Temple: A Paul Mitchell Partner School for your cosmetology education! We understand that the process can be confusing and our enrollment team is here to assist you in every step of the process.

Don't know where to start?

Here are the steps you need to take to begin your journey...



3. CHOOSE YOUR START DATE & SCHEDULE YOUR SIGNING

Excited about starting your education with us? Carefully consider what start date is right for you and your situation. Planning a vacation? Best to start after you return. Need to work during the day? Night school classes are the perfect solution!

Once you decide on your start date, you need to schedule your signing appointment with our enrollment team. During that appointment, you will sign your enrollment agreement, receive your student handbook and go over a number of important items you'll need to know before your first day of school.

The following are the requirements for your enrollment meeting:

- Complete "What Inspires You" essay
- \$100 application fee and \$50 enrollment fee (payable by cash or check)
- Driver's License (or other form of valid government – issued photo ID)
- High School Diploma, transcripts or GED certificate

4. FIGURE OUT THE FINANCIALS

Thinking about financing your education? We know it can be a confusing process but our financial aid team is here to support you in this process! There are a number of different types of financial assistance you can use here at The Temple. They include (but are not limited to): Pell Grants, Stafford Loans, VA benefits and scholarships. For a full understanding, read our beginners guide to financing your cosmetology education.

Our financial aid team will meet with you one-on-one to create an individualized financial aid package to fit your lifestyle and needs.

5. PREPARE FOR A FABULOUS FIRST DAY

Your first day of school as a Future Professional at The Temple: A Paul Mitchell Partner School will be an exciting one! (Pancake party, anyone?)

Here are a few need-to-know details for your first big day of school:

- Arrive in dress code: Black and white with a splash of color (primary clothing must be black and white). Please DO NOT wear jeans, shorts, or flip-flops. Keep in mind that you are joining the Beauty Industry – be professional in your dress!
- School starts promptly so please be sure to arrive 10-15 minutes early to set yourself up for success on your first day.
- Come hungry and ready for fun! We start the day with a pancake party and lots of get-to-know-you games and activities.



We're honored that your considering The Temple: A Paul Mitchell Partner School for your cosmetology education. We look forward to seeing you grow and succeed in this industry and are thrilled to be a part of your education journey!

*If you have any questions or need more information, please call **301.682.7550** and ask to speak to an admissions team member.*

Follow us on Social Media!



pmthetemple



@pmthetemple



TempleFrederick



pmthetemple

DAY SCHOOL START DATES

TUESDAY-SATURDAY PROGRAM

Tuesday-Friday 9:00am-4:30pm
Saturday 9:00am-5:00pm

JANUARY 23, 2018
AUGUST 21, 2018

MONDAY-FRIDAY PROGRAM

Monday 9:00am-5:00pm
Tuesday-Friday 9:00am-4:30pm

APRIL 23, 2018
OCTOBER 8, 2018

NIGHT SCHOOL START DATES

MONDAY-THURSDAY 5:00PM-10:00PM

FEBRUARY 12, 2018
MAY 7, 2018
JULY 9, 2018
SEPTEMBER 17, 2018

3-DAY PROGRAM START DATES

MONDAY-WEDNESDAY

Monday & Tuesday 9AM-8PM &
Wednesday 9AM-4:30PM

MARCH 5, 2018
JUNE 25, 2018
DECEMBER 3, 2018

APPLICATION FOR ENROLLMENT

Personal Information				
Name				
Mailing Address				
City/State/ZIP				
Home Phone	Daytime Phone	Cell	Do we have Permission to send a text? Y/N	
E-Mail Address				
Date of Birth	Social Security	U.S. Citizen?		
High School	Diploma OR GED		Y/N	
College	Degree OR Years			

Nearest Relation				
Name				
Mailing Address				
City/State/ZIP				
Home Phone	Work Phone	Cell	Do we have Permission to send a text? Y/N	
E-Mail Address				

How Did You Find Out About Us?	
Design Team	<input type="checkbox"/> Career Fair <input type="checkbox"/> High School Event <input type="checkbox"/> Community Event
Internet	<input type="checkbox"/> PMTS Web Portal <input type="checkbox"/> The Temple: A Paul Mitchell Partner School Website <input type="checkbox"/> Facebook <input type="checkbox"/> Twitter
Referral	<input type="checkbox"/> Future Professional _____ <input type="checkbox"/> Clinic _____ <input type="checkbox"/> Salon _____ <input type="checkbox"/> Friend _____ <input type="checkbox"/> Graduate _____ <input type="checkbox"/> Called The Temple: A Paul Mitchell Partner School

Which Program Are You Interested In? (Please choose one.)

Cosmetology - 3-DAY **27hr/week** Program (Mon & Tues: 9am to 8pm, Wed: 9am to 4:30pm)

Mar. 5, 2018

June 25, 2018

Dec. 3, 2018

Cosmetology - DAY Full Time **35hr/week** Program (Tues - Fri: 9am till 4:30pm, Sat: 9am till 5pm)

Jan. 23, 2018

Aug. 21, 2018

Cosmetology - DAY Full Time **35hr/week** Program (Mon: 9am till 5pm, Tues - Fri: 9am till 4:30pm)

Apr. 23, 2018

Oct. 8, 2018

Cosmetology - NIGHT Part Time **20hr/week** Program (Mon - Thurs: 5pm till 10pm)

Feb. 12, 2018

May 7, 2018

July 9, 2018

Sept. 17, 2018

Other Time Frames **Day 2019** **Night 2019** **Day 2020** **Night 2020** **Day 2021** **Night 2021**

Cosmetology - DAY Full Time **20hr/week** Program (Please inquire about this schedule)

Please Answer The Following Questions

Are you transferring from another Cosmetology Program? Y/N

How many hours do you need?

If yes, name of school: _____ Date withdrew: _____

Will you need additional information and help with financial assistance? Y/N

To Finalize Your Application, Please Submit The Following:

1. The completed Application Form
2. A **\$100** Application Fee for Admissions Processing and **\$50** Enrollment Fee
3. Two (2) head and shoulder pictures of yourself (they can be two copies of the same shot)
4. A photocopy of your current high-school transcripts, high-school diploma, or G.E.D. certificate

Agreement and Signature

By submitting this application, I affirm that the facts set forth in it are true and complete. I understand that if I am accepted at THE TEMPLE: A Paul Mitchell Partner School, any false statements, omissions, or other misrepresentations made by me on this application may result in my immediate dismissal.

Signature _____

Name (printed) _____ Date _____

Our Policy

It is the policy of this organization to provide equal opportunities without regard to race, color, religion, national origin, gender, sexual preference, age, or disability.

Thank you for completing this application form for THE TEMPLE: A Paul Mitchell Partner School

FAFSA CHECKLIST

You will need records of income earned in the year prior to when you will start school. You may also need records of your parents' income information if you are a dependent student.

For the current school year you will need financial information from your previous tax year. You may need to refer to:

- Your Social Security card. It is important that you enter your Social Security Number correctly!
- Your driver's license (if any) or other government-issued photo ID
- Your most current W-2 forms and other records of money earned
- Your (and your spouse's, if you are married) most current Federal Income Tax Return.
 - IRS 1040, 1040A, 1040 EZ
 - Foreign Tax Return, or
 - Tax Return for Puerto Rico, Guam, American Samoa, the U.S. Virgin Islands, the Marshall Islands, the Federal States of Micronesia, or Palau
- Your Parents' Federal Income Tax Return (if you are a dependent student)
- Your untaxed income records
- Your current bank statements
- Your current business and investment mortgage information, business and farm records, stock, bond and other investment records
- Your alien registration or permanent resident card (if you are not a U.S. citizen)

To organize your information, you can print and complete a FAFSA on the Web Worksheet before you begin entering your information online. However, you are not required to do so. FAFSA on the Web will guide you through the questions that you must answer, and you can save your application and return to it later if you don't have the information you need to answer any of the questions.

1. Download the FAFSA on the web worksheet at:
<http://studentaid.ed.gov/PORTALSWebApp/students/english/fafsaworksheet.jsp>
2. Go to www.fafsa.ed.gov
3. Apply for your FSA ID (fsaid.ed.gov).
3. Start entering the data in the FAFSA. Remember that THE TEMPLE's campus code is **041518**. To avoid any verification challenges and speed the process, **please remember to check the box that allows the FAFSA to pull data directly from the IRS web site.**
4. Ensure you complete the ENTIRE process, including digitally signing the FAFSA. You will know when you are done when you get the screen with your Data Release Number (DRN), your estimated Expected Family Contribution (EFC) and your Confirmation number.
5. You will get a confirmation email within 48 hours with your Student Activity Report (SAR). Please communicate with our financial aid team via email or phone with the following information: your DRN, your EFC, and your Confirmation Number. THE TEMPLE: A Paul Mitchell Partner School will receive a version of your SAR (called an ISIR) within three to five business days of your completion of the FAFSA. At this point, THE TEMPLE: A Paul Mitchell Partner School will contact you to confirm receipt along with letting you know the next steps and if we need any further data.

Please do not mail your records in.

Gap Financing

“Gap” financing is the term that is applied to any funding necessary to cover the difference between what is available from government backed, Title IV programs and the remaining costs that would be incurred once enrolled at **THE TEMPLE: A Paul Mitchell Partner School**.

The amounts can range from less than \$1000 to the entire costs of our program, depending on the results of your FAFSA.

Fortunately, here at **THE TEMPLE: A Paul Mitchell Partner School**, we have four ways to cover that “gap”.

Cash

While this may not seem like an obvious choice, and in many cases, may not be an option at all, paying the remaining difference with cash can be the least expensive method available.

Paying the remaining balance up front has many benefits:

- Depending on how you file your tax returns, the person who pays this remaining balance may qualify for a write down on their taxes. THE TEMPLE: A Paul Mitchell Partner School distributes 1098T forms at the end of each year to those who have been charged tuition for the previous year.
- By lowering your total loans, you lower your long-term interest payments.

PLUS Loans

You may sometimes see these loans referred to as Parent PLUS Loans. The reason is that while these are part of the government student loan program, these loans are taken out entirely by the parents. In addition, these loans are credit based, meaning we will need to do a simple credit check to see if the parent even qualifies.

Benefits to the PLUS Loan:

- The interest rate on the PLUS loan is fixed at 7% and amortized out over ten years.
- The credit score necessary is significantly lower than any other type of loan on the market.
- Starting in July 2009, PLUS loan payments can be pushed out like Stafford Loans. Meaning that payment can be scheduled to begin six months after you leave our program.
- If the parent’s credit is denied during the initial credit check, the student **AUTOMATICALLY** is treated like an “independent” student for the purposes of Title IV loans and can receive an additional **UNSUBSIDIZED** loan up to \$4000 per academic year.

Downsides to the PLUS Loan:

- The loan is in the name of the parent **ONLY**. Students do not go on the loan.

NOTE: Please know that it is very important that you allow THE TEMPLE’s financial aid team to do a PLUS loan credit check, whether you intend to use the PLUS loan program or not. Many parents say they do not want to go on a loan for school, and we completely understand that. However, if as a parent, you are **DENIED** the opportunity to participate in the PLUS loan program because of adverse credit, then your child will automatically be eligible for up to \$8000 in Unsubsidized Stafford Loans. This will be more than enough to cover the remaining “gap” needs at THE TEMPLE.

Private Loan Options

Over the last few years, many lenders have gotten into what is called the “private student loan” business. We wanted to take a minute to review what these options may entail:

What Private Student Loans ARE:

- Private Student Loans are credit-based loans offered privately by banks or lending companies with terms and conditions that vary from lender to lender.
- Private Student Loans are similar to loans you might receive when you purchase a vehicle or appliance.
- A Private Student Loan is a contractual agreement between a student and a lending company.

What Private Student Loans are NOT:

- Private Student Loans are NOT funded or guaranteed by the federal government.
*NOTE: As of the end of 2004, Sallie Mae, also known as SLM Corporation, no longer has ties to the federal government.
- Private Student Loans are NOT to be confused with what is commonly referred to as Federal Financial Aid or Title IV Funding.
- A Private Student Loan is usually NOT a contractual agreement between a student and the school.

The biggest thing to remember with Private Students loans is that they are no different than any other loan you would get from a bank or credit card company. They will require much higher credit scores, which usually requires some type of co-borrower on the loan. Their interest rates are substantially higher than Title IV loans. And finally, private loans are generally not tax deductible like Title IV loans can be.

THE TEMPLE: A Paul Mitchell School has no direct relationship with any private student loan company. All applicants are welcome to pursue this option on their own and THE TEMPLE: A Paul Mitchell School financial aid team will work closely with you and the lender to provide whatever data they require during your application process.

Private Scholarships and Grants

THE TEMPLE will assist any qualified applicant in the process of applying for various private scholarships and grants while in our program. Some examples include:

- The A.C.E. Grant (offered through a sponsoring salon)
- Various Maryland career grants & programs offered throughout the fiscal year, depending on State funding levels
- The Tolbart Grant program
- OPI Scholarship

We also encourage all our applicants to look into various scholarships and programs offered by the community. Over the years, we have seen funds come from 4H, community groups, various charity organizations along with many national programs. Be advised that many of these programs require that the applicant already be enrolled in the program and performing at better than average academic performance. Also note that any awards that happen while enrolled in school MAY impact your federal aid because all Title IV awards are to be considered AFTER grants and scholarships are awarded.

Conclusions

In the end, our creative and knowledgeable financial aid team here at **THE TEMPLE: A Paul Mitchell Partner School** is here to help craft a funding solution that is right for you, and the particulars of our life.

If this is the school you want to join, then let us come up with a solution that helps you pay for it. We are open to all ideas and would love to sit with you to go over them. From paying in full, to developing in house loans, we can manage all your “gap” funding needs.

For any further questions, please contact us directly at: **301-682-7550**
Or email us at: **finaid@pmthetemple.edu**

CONSUMER INFORMATION DISCLOSURES

Tuition and Financial Aid Information

THE TEMPLE: A Paul Mitchell Partner School currently offers a Cosmetology Program for the State of Maryland. The costs of the program break down as such (effective January 1, 2014):

Application Fee (due with Application):	\$100.00
Enrollment Fee (due after acceptance):	\$50.00
Equipment, Textbook, and Supplies:	\$3000.00
Tuition:	<u>\$17,000.00</u>
TOTAL COSTS:	\$20,150.00

All fees paid by a Future Professional shall be refundable if the student chooses not to enroll in, or withdraw from, THE TEMPLE within seven (7) calendar days after having signed a contract. If the Future Professional chooses not to enroll after the seven day cancellation period, but before the first day of instruction, THE TEMPLE may retain the Registration Fee.

We have several methods by which a Future Professional can pay for their education:

1. **Self Financing:** By far the least expensive way to pay for your tuition is to either pay in full up front, or break your tuition into equal monthly payments over the course of your education. By paying in this manner, you avoid any type of interest payments. In addition, you will receive a 1098T form at the end of the calendar year showing all school related expenses you have paid. Many times, this form can be used to reduce your taxable income and save you money on your taxes. As always, please check with your accountant for more information on 1098T deductions.
2. **Title IV Funds:** THE TEMPLE: A Paul Mitchell School participates in the William D. Ford Federal Direct Loan program and offers PELL Grants, Stafford Loans, and PLUS Loans to those who qualify. We will need a completed FAFSA from www.fafsa.ed.gov to use this option. THE TEMPLE's campus code is: 041518
3. **Internal Financing:** In rare cases, THE TEMPLE: A Paul Mitchell School can also finance the education "in-house". The student **MUST** be on auto payment.

There are three things to remember with any of the financing options:

1. No matter which financial option is chosen, the application fee must be paid by the first day of class.
2. No matter which financial option is chosen, all monies owed to THE TEMPLE: A Paul Mitchell School must be kept current as defined by your contract. THE TEMPLE is to be paid in full before a graduation certificate can be issued.
3. Title IV funding is entirely determined by your need and qualifications. THE TEMPLE: A Paul Mitchell School does not make the decision on whether you "qualify" for Title IV funds. Not everyone will qualify for all funding.

Completion Rate (as determined by NACCAS): 64.22%
 Completion Rate (as determined by MHEC): 74%
 Licensure Rate (as determined by NACCAS): 98.14%
 Licensure Rate (as determined by MHEC): 98%

Placement Rate (as determined by NACCAS): 80.15%
 Placement Rate (as determined by MHEC): 75%
 Retention Rate (as determined by IPEDS): 87%

(for further IPEDS data, please refer to the College Navigator Site at <http://nces.ed.gov/collegenavigator/>)

Average salary for a Maryland Cosmetologist (as determined by NACCAS survey): \$35,973

Cost of tuition at THE TEMPLE: A Paul Mitchell Partner School (including student learning kit): \$20,150

BE Amazing



NOW OFFERING

VA EDUCATIONAL BENEFITS

THE TEMPLE, after years of preparing, is proud to announce our approval for VA Educational Benefits! This basically means we can now offer the amazing women and men of our armed services, along with members of their families, the opportunity to attend our institution. We are very proud of this accomplishment and already have three amazing future professionals taking advantage of this opportunity.

OUR FACILITY CODE IS
2-5-2099-20

Please pass this information along if you know anyone who could benefit from the VA programs.



22 west church street
frederick, maryland 21701

web: www.pnthetemple.edu
email: admissions@pmthetemple.edu



For more information about our graduation rates, the median loan debt, who completed the program and other important information regarding the location you are interested in attending, please visit our website at paulmitchell.edu/ge. Financial aid is available to those who qualify.